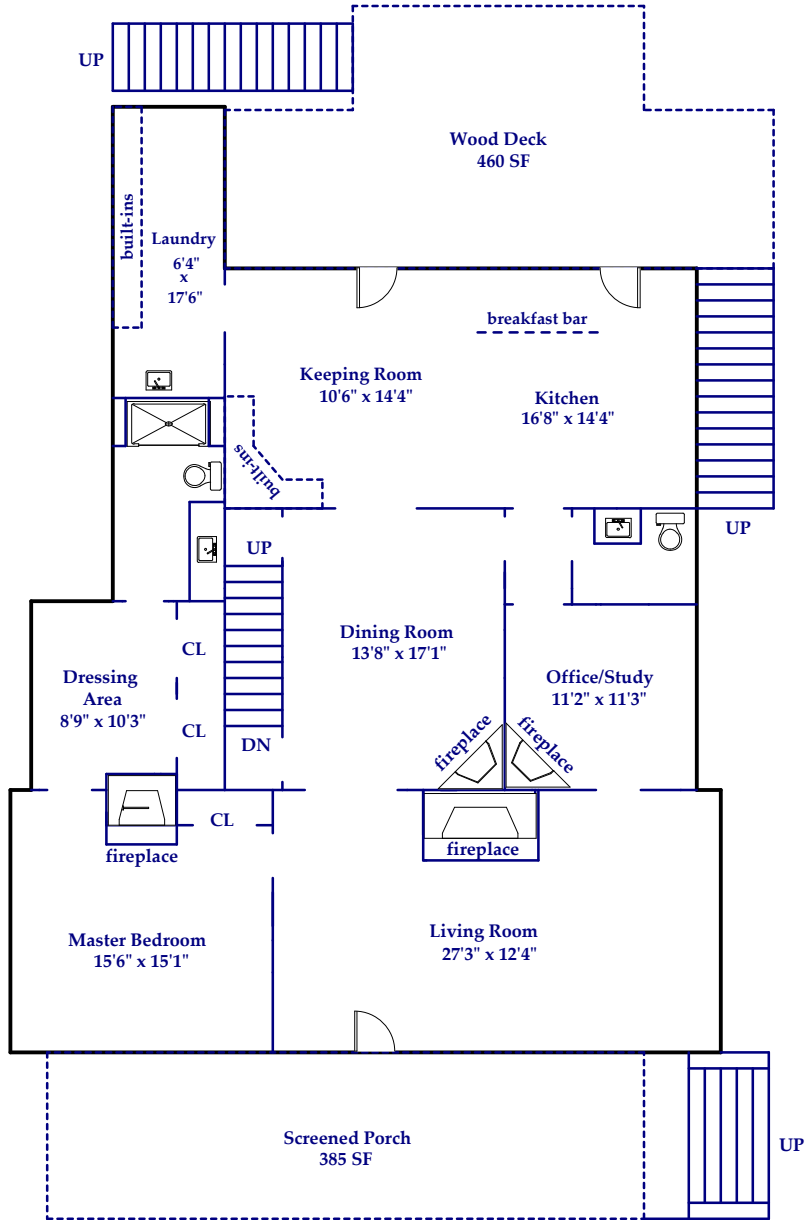


# SQUARE FOOTAGE CALCULATIONS

*170 Towhee Lane, Saluda*

Approximate Total Finished/Heated Living Area:  
3370 Square Feet

First Floor: 2049 Square Feet  
Second Floor: 1321 Square Feet



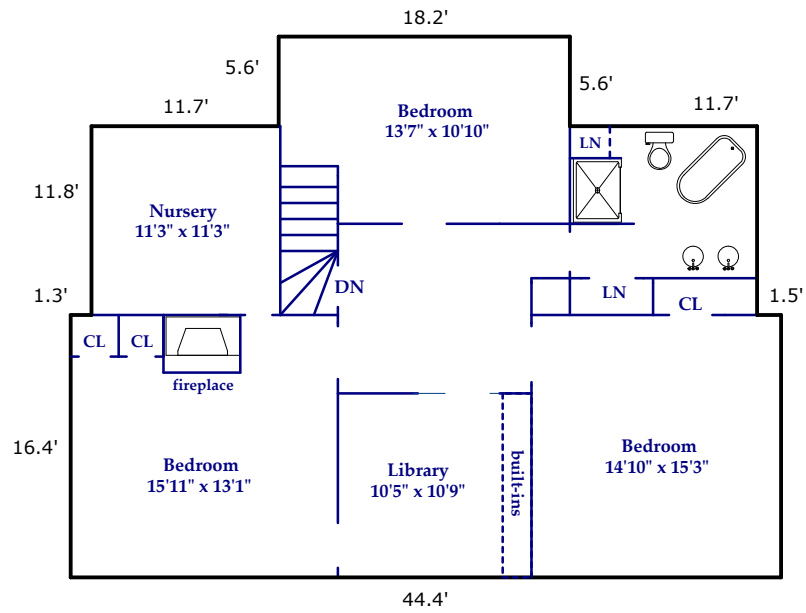
**FIRST FLOOR**  
2049 Square Feet

Prepared by Agent Services: **Beverly-Hanks & Associates**

Information herein deemed reliable, but not guaranteed. Floor plan for review purposes only. All dimensions approximate. Not for construction.

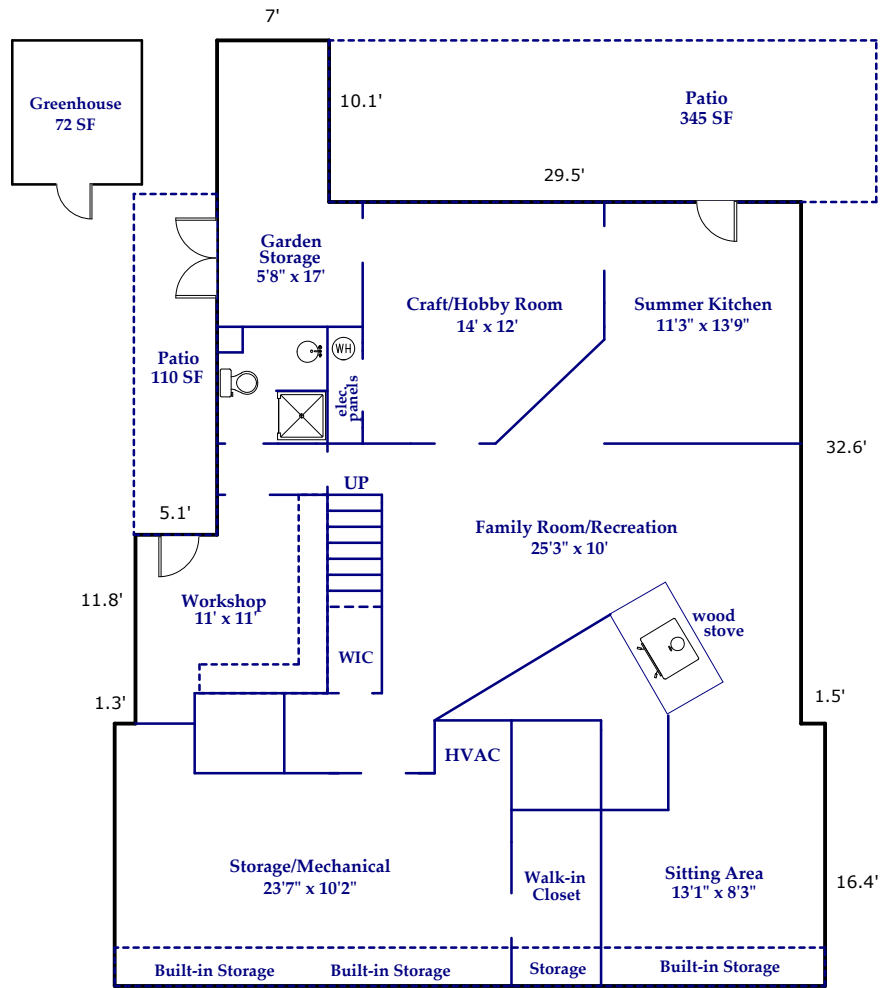
Scale: 1" = 12'

# SQUARE FOOTAGE CALCULATIONS



**SECOND FLOOR**  
1321 Square Feet

# SQUARE FOOTAGE CALCULATIONS



## BELOW GRADE

2049 Square Feet

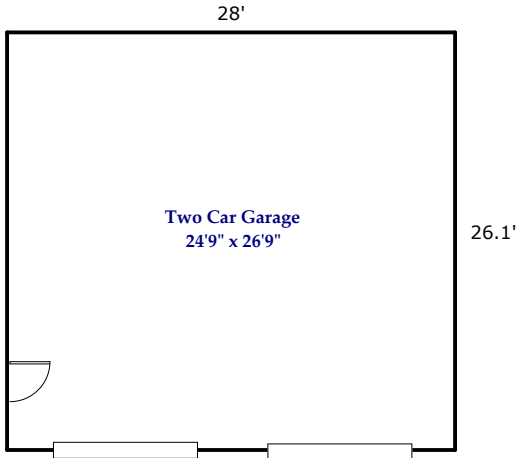
\*Ceiling Height Below 7'

Approximate Total Finished/Heated Living Area:  
674 Square Feet

Semi-Finished Areas: 1089 Square Feet

Unfinished Areas: 286 Square Feet

# SQUARE FOOTAGE CALCULATIONS



**DETACHED GARAGE**  
731 Square Feet