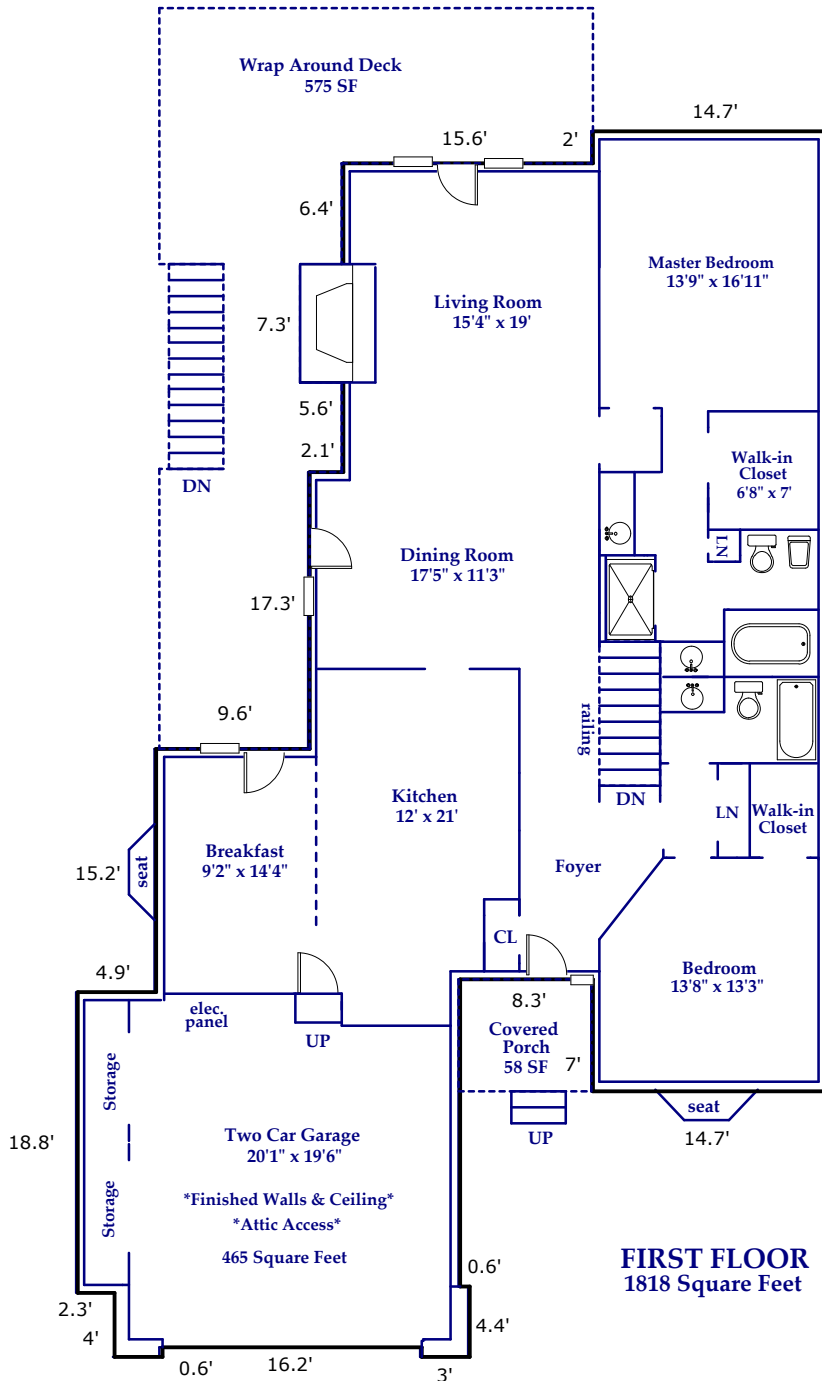


7 Ridgeview Drive, Asheville

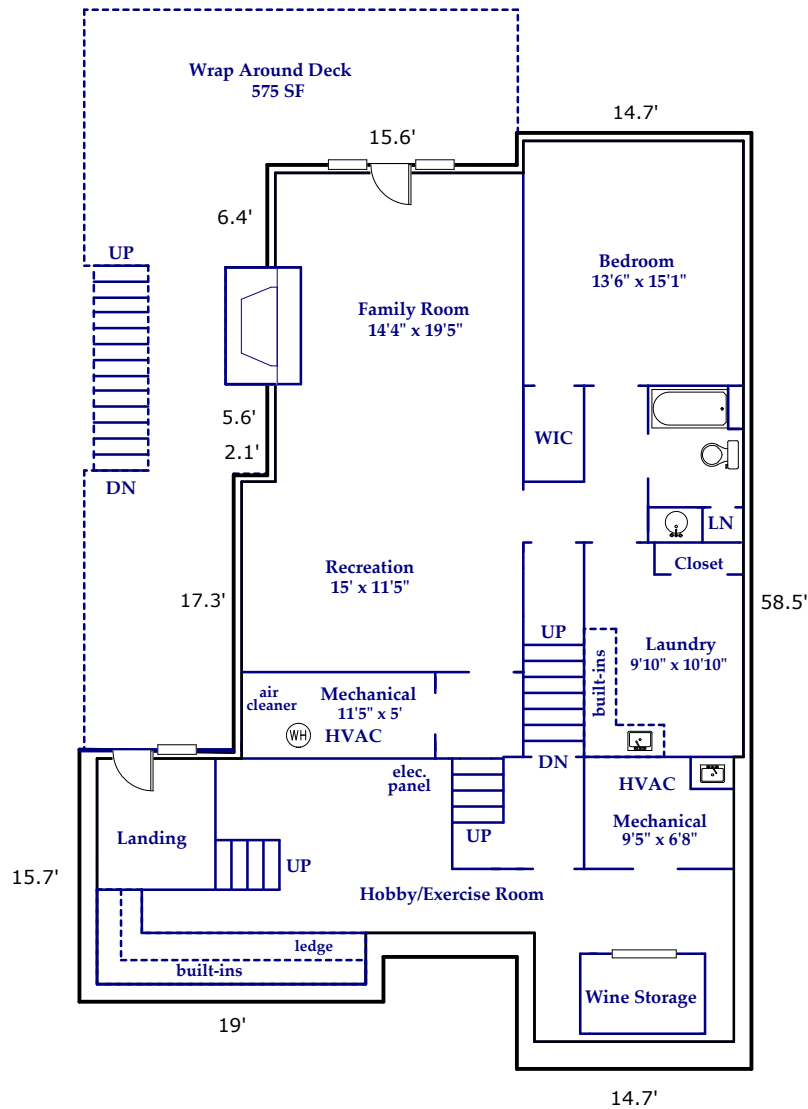
Approximate Total Finished/Heated Living Area:
4456 Square Feet

First Floor: 1818 Square Feet
Below Grade: 1586 Square Feet
Basement: 1052 Square Feet

Condominium Finished/Heated Living Area is Calculated from Interior Dimensions
Exterior Dimensions Provided as a Courtesy



Prepared by Judy Brouillette-O'Neil: ProPlans of the Carolinas, LLC

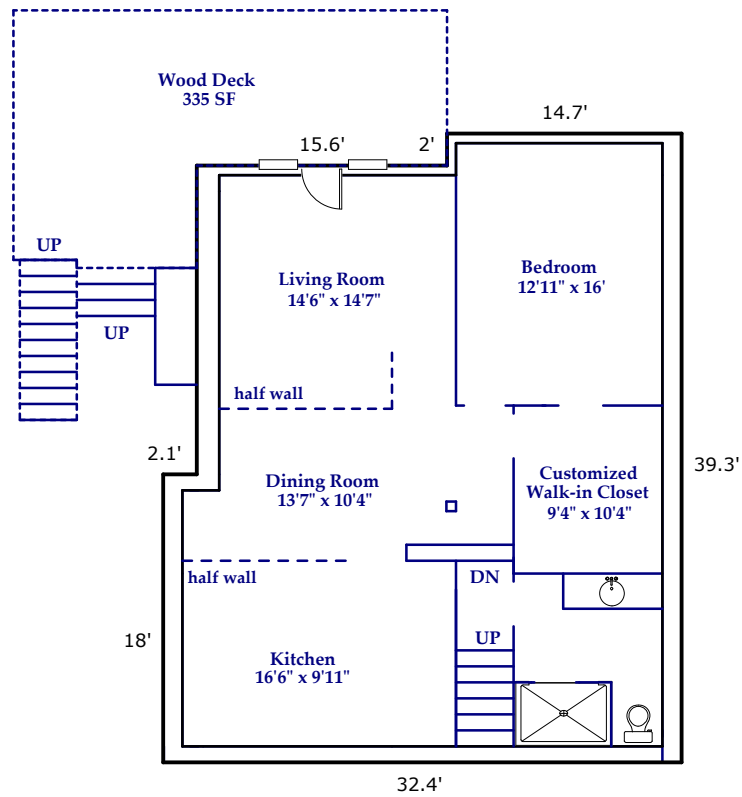


BELOW GRADE
1707 Square Feet

Approximate Total Finished/Heated Living Area:
1586 Square Feet

Unfinished Area: 121 Square Feet

HOUSEKEEPER/CAREGIVER APARTMENT



FINISHED BASEMENT
1052 Square Feet

Total Square Footage Under Roof for All Finished/Unfinished & Heated/Unheated Areas:
5042 Square Feet

All dimensions are rounded to the nearest .01 and are deemed reliable, but not guaranteed.
Square Footage Calculations determined following ANSI Standards and NCREC House Measuring Square Footage Guidelines.