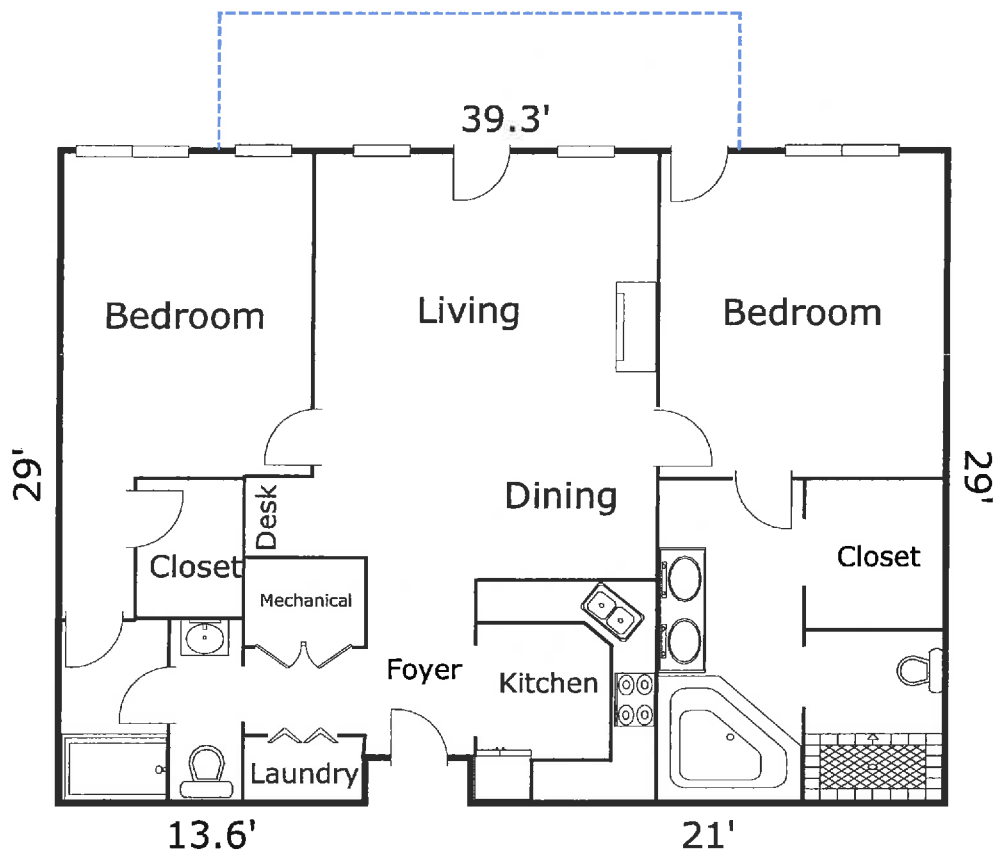


9 Kenilworth Knolls Unit#123

Main Level
[1130.3 Sq ft]



Information herein deemed reliable but not guaranteed.
Floor plan for evaluation purposes only.
All dimensions approximate. Not for Construction

Area Calculations Summary

Living Area		Calculation Details
Main Level	1130.3 Sq ft	$39.3 \times 27 = 1061.1$
		$2 \times 21 = 42$
		$2 \times 13.6 = 27.2$
Total Living Area (Rounded):	1130 Sq ft	