

736 South Mills River Road, Mills River

Approximate Total Finished/Heated Living Area:
5358 Square Feet

First Floor: 2452 Square Feet
Second Floor: 1758 Square Feet
Below Grade: 1148 Square Feet

Total Square Footage Under Roof for All Finished/Unfinished & Heated/Unheated Areas:
6925 Square Feet

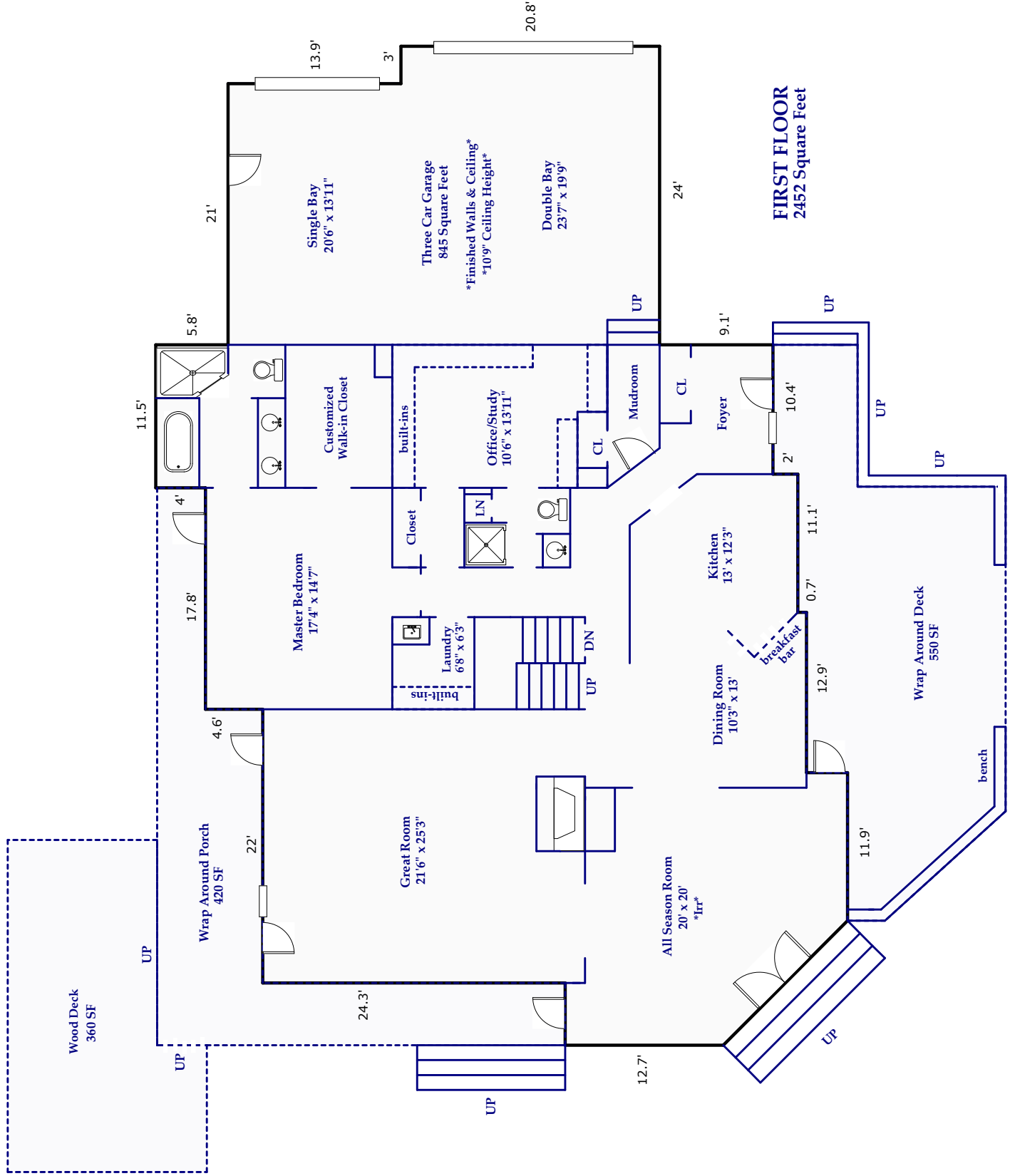
First Floor: 2452 Square Feet
Garage: 845 Square Feet
Second Floor: 1758 Square Feet
Below Grade: 1870 Square Feet

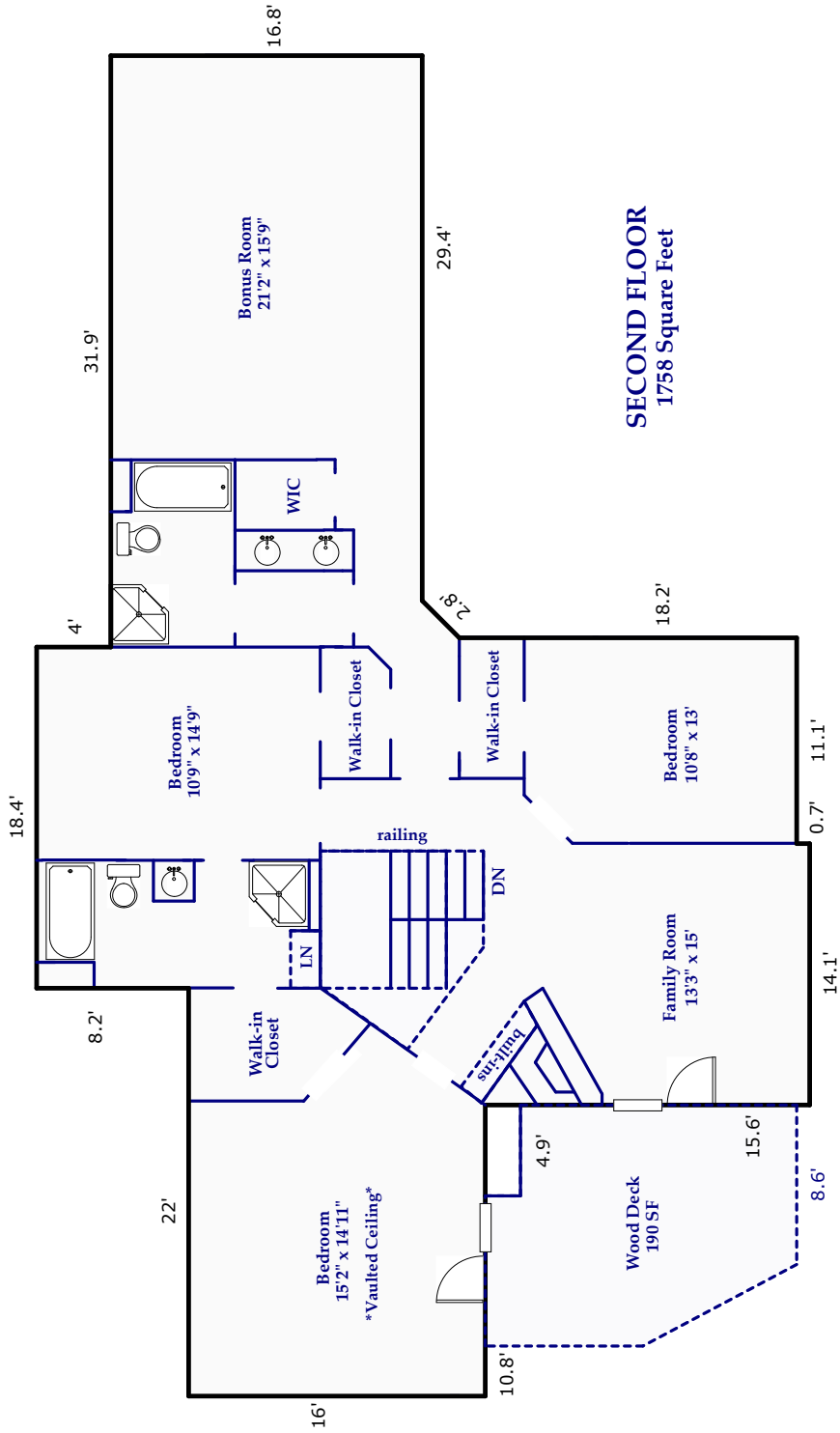
Detached Garage/Barn
1220 Square Feet

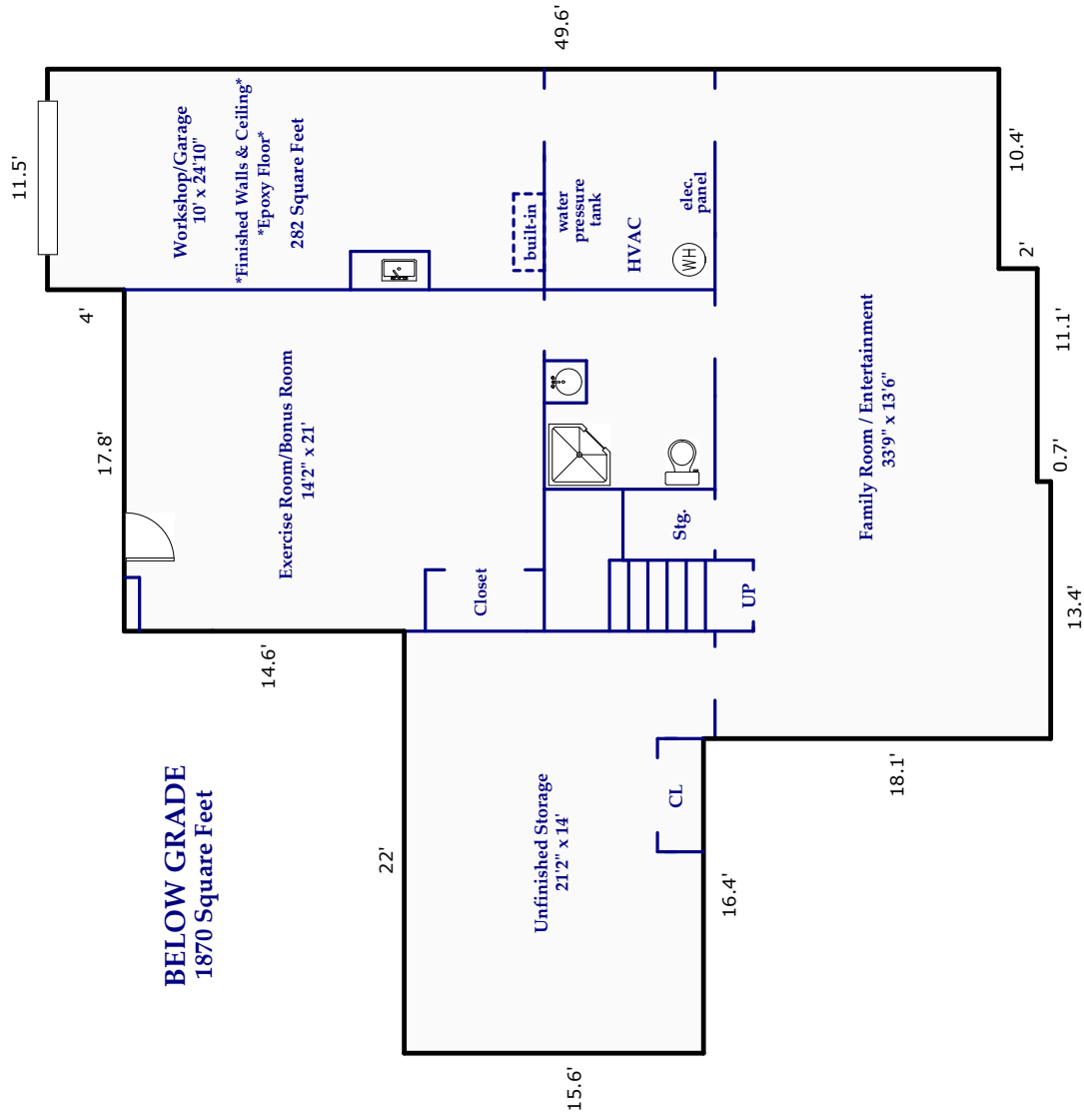
Second Floor Storage Area: 636 Square Feet

Prepared by Judy Brouillette-O'Neil: ProPlans of the Carolinas, LLC

All dimensions are rounded to the nearest .01 and are deemed reliable, but not guaranteed.
Square Footage Calculations determined following ANSI Standards and NCREC House Measuring Square Footage Guidelines.







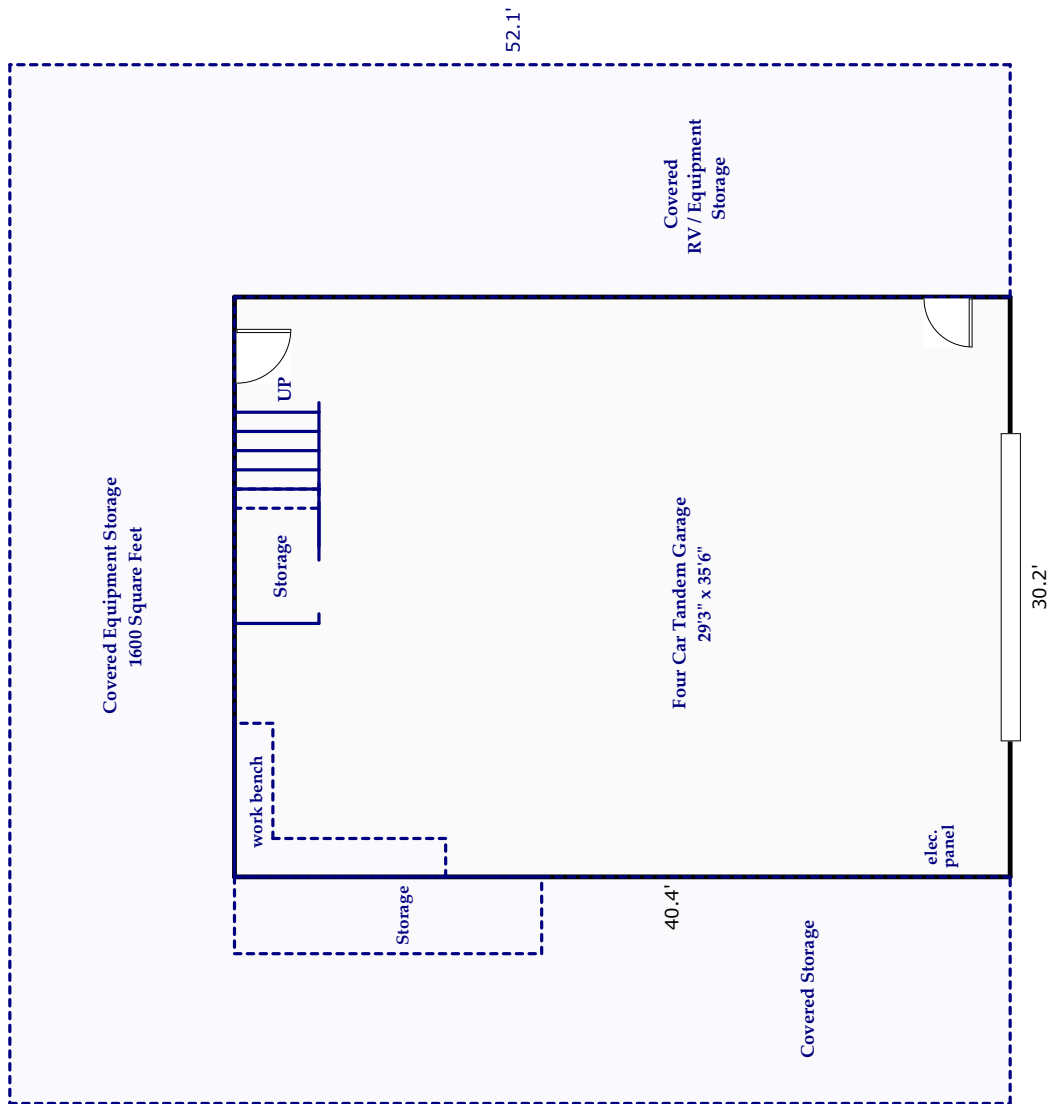
Approximate Total Finished/Heated Living Area:
1148 Square Feet

Finished/Unheated Area: 282 Square Feet

Workshop / Garage

Ceiling Height: 6'10" - 7'4"

Unfinished Areas: 440 Square Feet



DETACHED GARAGE / BARN
1220 Square Feet

